

MONTHLY MEMBERSHIP PROGRESS REPORT

District A 15

Results as of: 3/31/2026

GMT:

LOCATION ONTARIO

GMT CA

Clubs			
RESULTS FOR 2025-2026			
QUARTER	NEW CLUB GOAL	NEW CLUBS	DROPPED CLUBS
JULY/AUG/SEPT	0	0	0
OCT/NOV/DEC	1	0	0
JAN/FEB/MAR	0	0	0
APR/MAY/JUNE	0	0	0

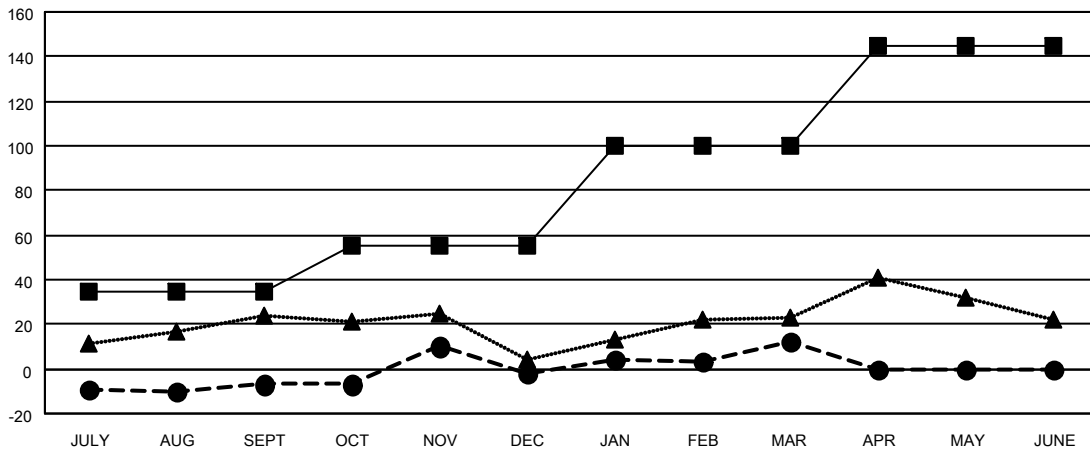
Members			
RESULTS FOR 2025-2026			
QUARTER	MEMBER GROWTH NET GOAL	MEMBER GROWTH ACTUAL	DROPPED MEMBERS ACTUAL (including transfers)
JULY/AUG/SEPT	35	16	23
OCT/NOV/DEC	20	43	32
JAN/FEB/MAR	45	29	15
APR/MAY/JUNE	45	0	0

GOALS AND ACTUAL NEW CLUBS CUMULATIVE



- - CURRENT YEAR GOALS FOR NEW CLUBS
- - CURRENT YEAR ACTUAL NEW CLUBS
- ▲ - LAST YEAR ACTUAL NEW CLUBS

GOALS AND ACTUAL MEMBERS CUMULATIVE



- - MEMBER GROWTH NET GOAL
- - MEMBER GROWTH ACTUAL
- ▲ - LAST YEAR MEMBERSHIP ACTUAL

DROPPED CLUBS: 0	
DROPPED MEMBERS	
DECEASED	10
CLUB CANCELLED	0
OTHER	60
TOTAL	70

24 CLUBS OF 56 ADDED 1 OR MORE NEW MEMBERS

GENDER DISTRIBUTION	
MALE	906 (68.53%)
FEMALE	416 (31.47%)

[CLICK HERE FOR CUMULATIVE MEMBERSHIP DATA](#)

TOTAL FAMILY UNIT MEMBERS	181
FAMILY MEMBERS PAYING HALF DUES	92